

Serving The Top Investors In the World

- Top wealth management firms & hedge funds
- Top accounting & consulting firms

[GET ACCESS – click here](#)



Proof Is In Performance

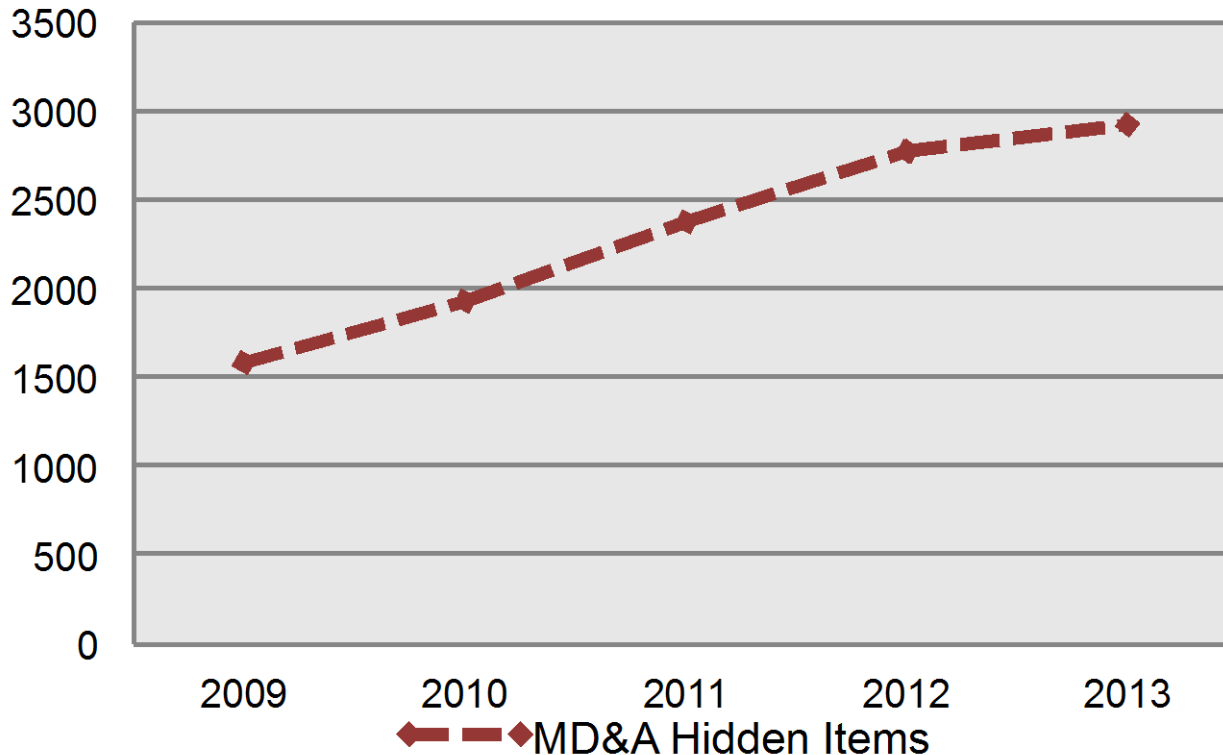
[Performance Tracking](#)– quarterly newsletter

- Honest
- Direct
- Diligent
- Accountable

Don't Just Take My Word For It – You Don't Have To.

More Needles, Bigger Haystacks

Material Hidden Items
16% CAGR



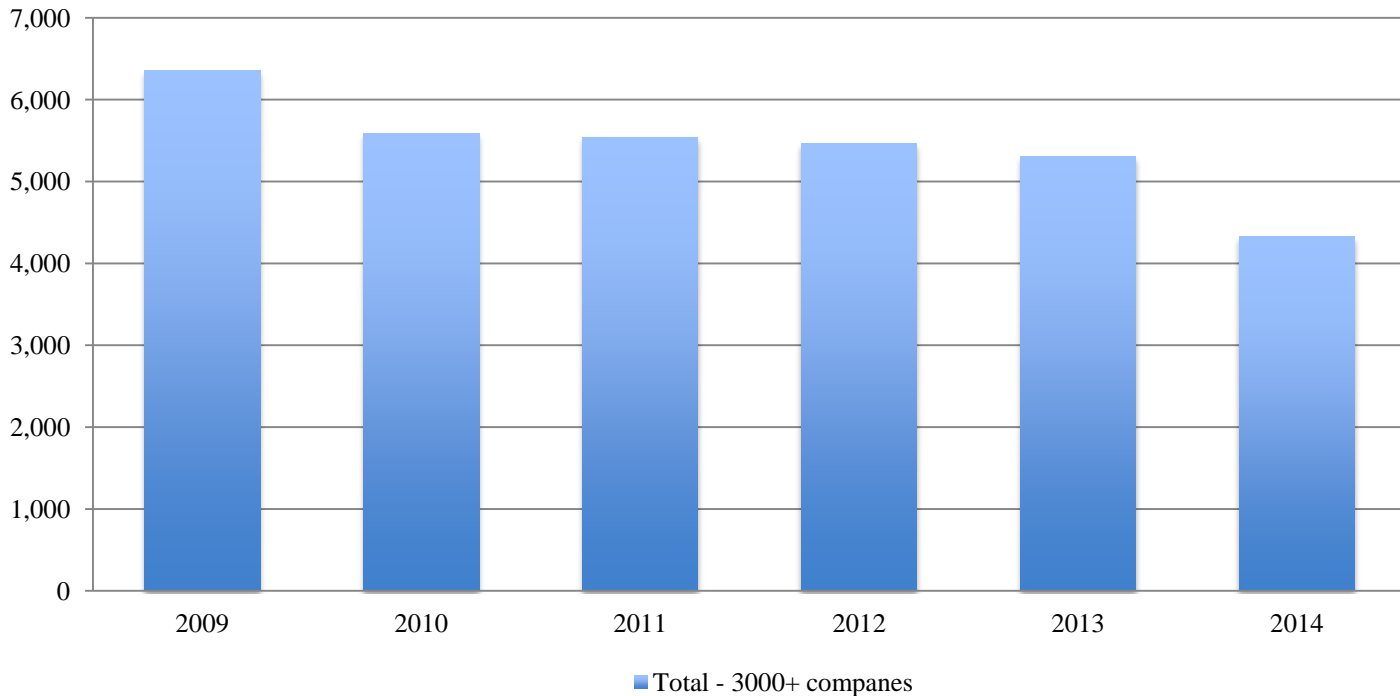
Items found only in the MD&A (e.g. gains, charges, deferred items, etc) that distort income statement results are rising rapidly.

Large Asset Write-Downs – A Red Flag

32,583

Over the last 5+ Years, we found 32,583 write-downs.

of Write-Downs

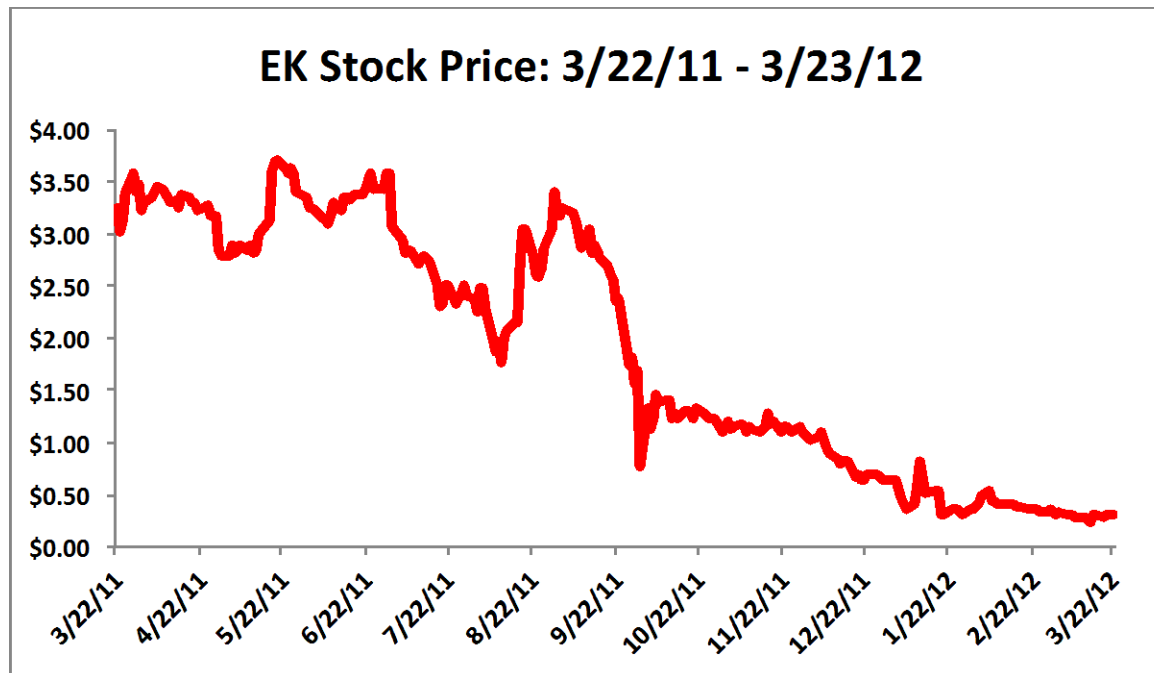


Early Indicator for Bankruptcy

Report on Eastman Kodak (EKDKQ.PK) on [3/21/2011](#)

2010 10-K Revealed Abnormal Pension Assumptions

1. 2.2% of revs from pension, abnormally high return on plan asset assumption 8.7%
2. Underfunded by \$2.6bn or 3x the market cap at the time
3. Valuation implied 10% CAGR in NOPAT for 11 years
4. Down 90% while S&P 500 was down ~3%, no longer under coverage



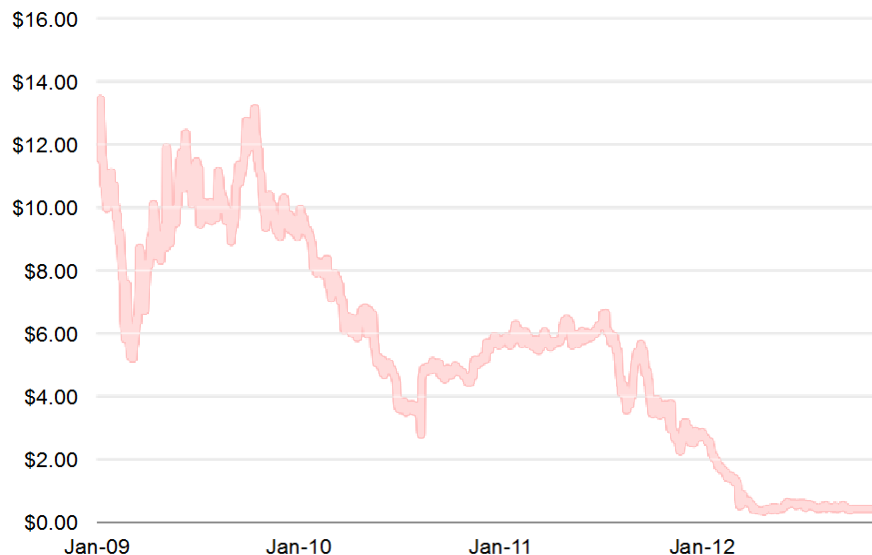
*This graph was created based on information collected and analyzed by New Constructs, LLC. New Constructs regularly gathers information from over 3,000 companies' 10Ks, including the Notes to the Financial Statements and MD&A.

Early Indicator for Fraud

Dynegy (DYN) Fraud Case 2012 – Defrauding Creditors

1. Asset transfer in subsidiaries found to be fraudulent
2. Benefited activist investor Carl Icahn, with two board representatives at DYN
3. New Constructs rating before fraud charges: Very Dangerous
4. Write-Downs in 3-yrs prior to fraud: 16 charges totaling \$3.85bn (346% net assets)

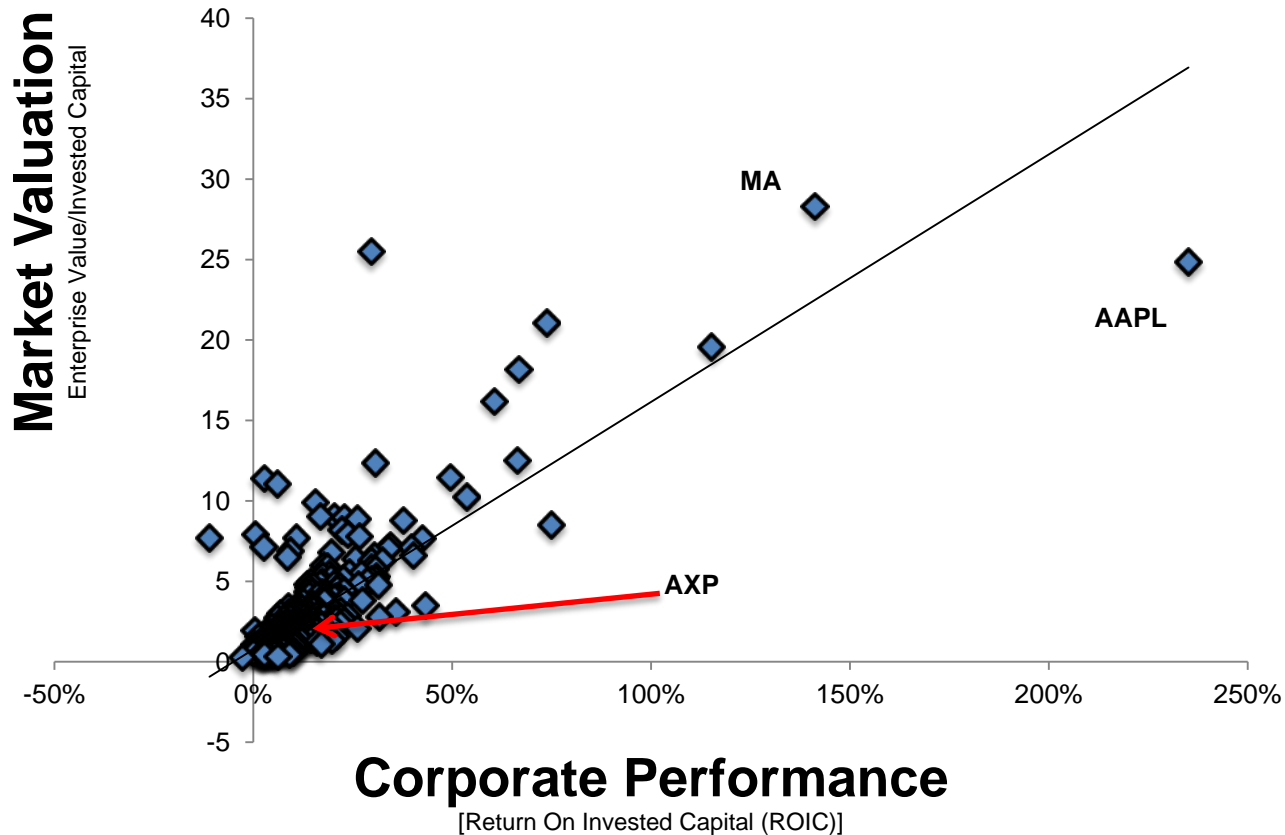
DYN - stock price



Direct Link: Services & Stock Price

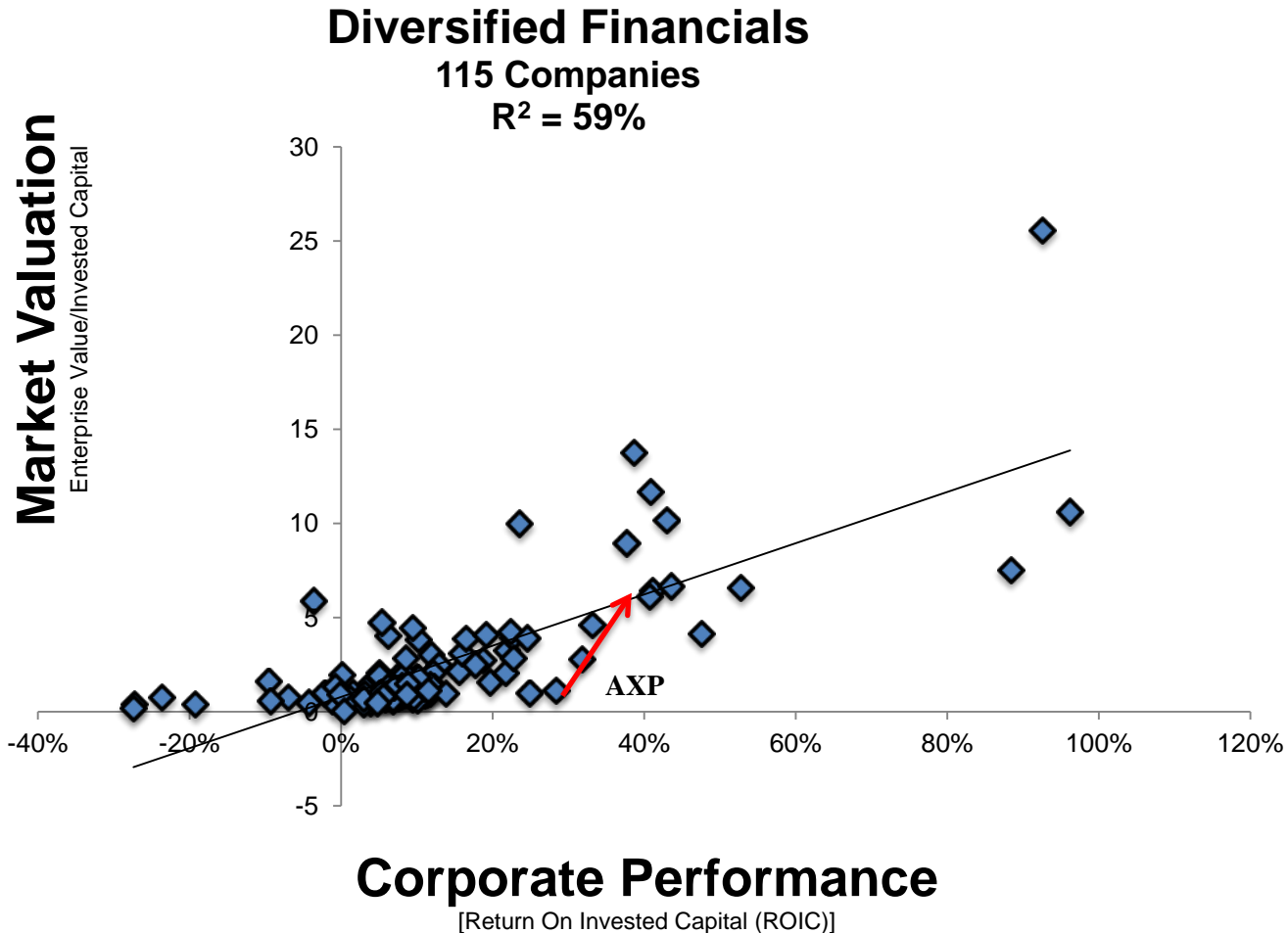
Improve Corporate Performance -> Improve Stock Price

$R^2 = 63\%$ for S&P500



Sector/Industry Detail and Benchmarks

Big Picture Supported By Individual Company Models



Detailed Ratings, Models and Reports

Intel Corporation (INTC) : \$29.76 at close on Jan 15, 2016

Overall Risk/Reward Rating	Quality of Earnings		Valuation		
	Economic vs Reported EPS	Return on Invested Capital (ROIC)	FCF Yield	Price-to-EBV Ratio	Growth Appreciation Period (GAP)
Very Dangerous	Misleading Trend	Bottom Quintile	< -5%	> 3.5 or -1 < 0	> 50
Dangerous	False Positive	4th Quintile	-5% < -1%	2.4 < 3.5 or < -1	20 < 50
Neutral	Neutral EE	3rd Quintile	-1% < 3%	1.6 < 2.4	10 < 20
Attractive	Positive EE	2nd Quintile	3% < 10%	1.1 < 1.6	3 < 10
Very Attractive	Rising EE	Top Quintile	> 10%	0 < 1.1	0 < 3

Actual Values					
INTC	\$1.13 vs. \$2.34	15%	6%	1.0	< 1

Benchmarks					
S&P 500 (SPY)	Positive EE	19%	2%	2.8	25
Russell 2000 (IWM)	Positive EE	6%	-1%	3.3	31

[Company Model](#) [Download Report](#)

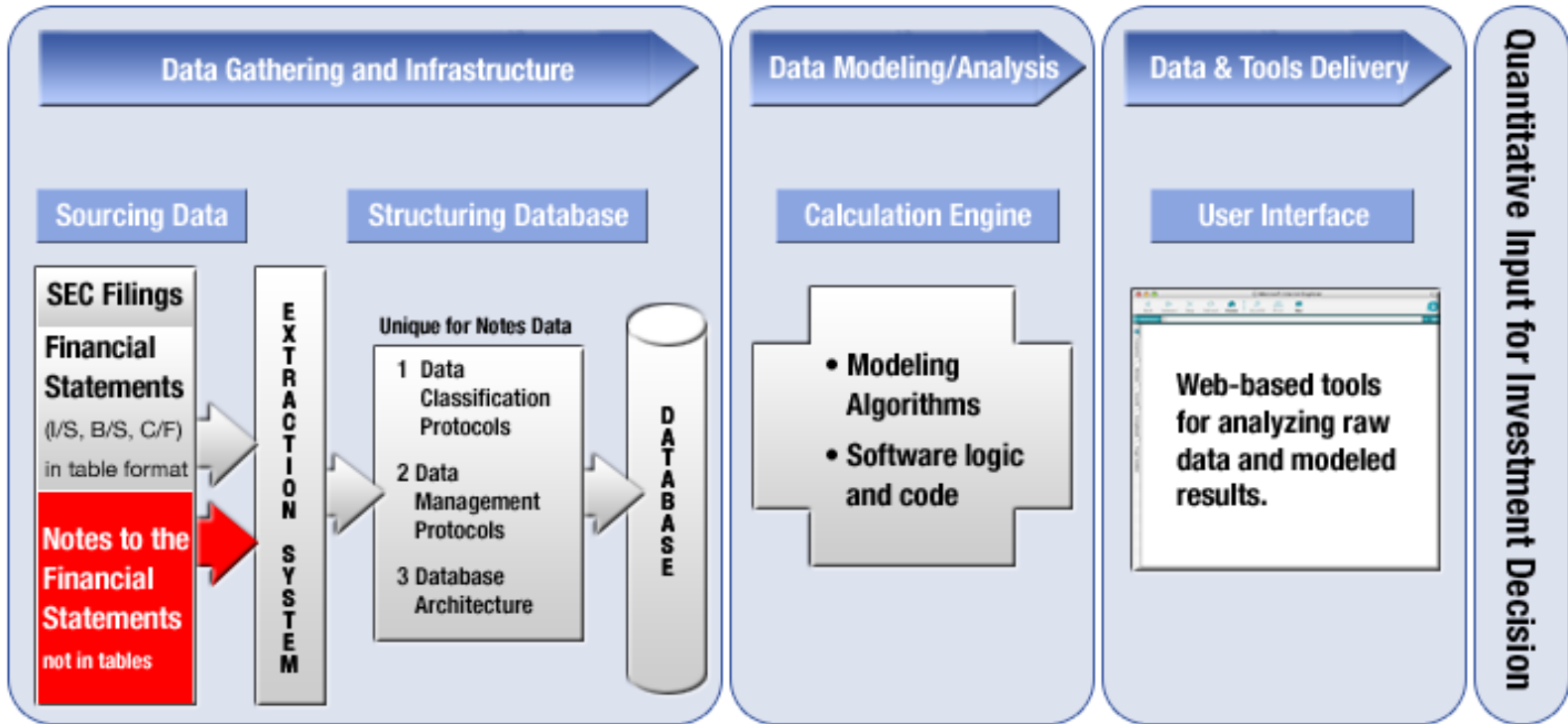
Free Resources

1. [Free research](#), alerts and updates
2. Free [Education](#)
3. Free [Tutorials](#)
4. See our [models](#)
 - 100% transparency
 - Directly linked to SEC filings
 - 100% customizable

Appendix

Proprietary Research Platform

Focus: Exploit Insights from Footnotes on 3000+ Stocks



Source: Novo Capital Management, LLC

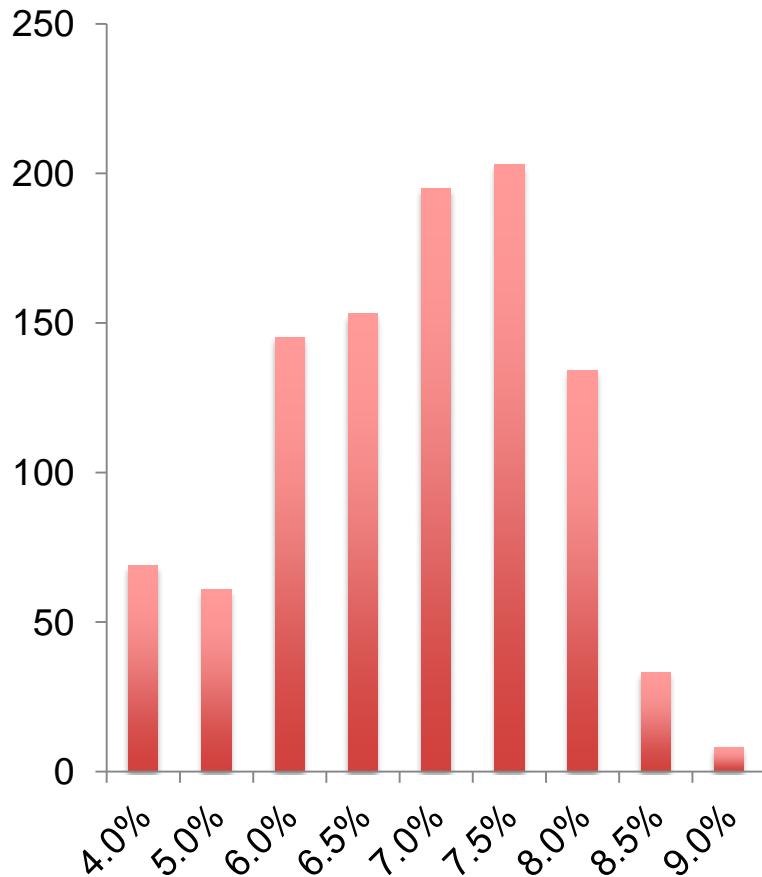
Gathering and analyzing data from the *Notes to the Financial Statements* is key to better analysis and understanding of:

1. **Profitability and**
2. **Valuation.**

Management's Influence on Profits

Micro and Macro Views

Distribution of Return On Plan Asset Assumptions



Auditors & investors need to know this data.

- Raising the expected Return on Plan Assets (EROPA) reduces reported pension expense.
- The mean EROPA for 2014 was 6.5%. Roughly 55% of companies expect a long-term return on plan assets between 6.5% and 7.5%.
- Virtusa Corp (VRTU) has the most aggressive assumptions, with EROPA of 10.38%, followed by Exlservice Holdings (EXLS) at 9%.

Value Proposition

We find it. You benefit.

1. Best fundamental data in the business
2. Best earnings quality and valuation models
3. Best protection from devils in details of SEC filings
 - Led by top **accounting & finance expertise** leveraging the best technology

Basic Services

Coverage	3000+ Stocks	400+ ETFs	7000+ Mutual Funds
	Updated Daily	Updated Daily	Updated Daily
Protection	Ratings & Reports	Ratings & Reports	Ratings & Reports
	Screeners	Screeners	Screeners
Idea Generation	Monthly Newsletter	Qrtly Newsletter	Qrtly Newsletter
	Pick of the Week	Pick of the Week	Pick of the Week
Monitoring	Portfolio Reviews	Portfolio Reviews	Portfolio Reviews
	Alerts	Alerts	Alerts
Access	Web/mobile	Web/mobile	Web/mobile
	Email	Email	Email
	Custom data/reports	Custom data/reports	Custom data/reports

Portfolio Tracking & Alerts

My Dashboard [My Portfolio](#) Ratings Screeners [Blog](#)

Add up to 50 tickers at a time to your portfolio.

Portfolio: My Portfolio (default) » Edit » Alerts Add Ticker(s): Add

Ticker ▲	Name	Type	Sector / Category	Price ¹	Mkt Val / AUM ²	Overall Rating	Report / Details	ROIC	FCF Yield	Price to EBV	GAP	Analyst Notes ³	Remove
AAPL	Apple Inc.	Stock	Information Technology	\$118.90	\$697,329	Attractive		177%	6%	1.1	> 100		✖
ABCO	The Advisory Board Company	Stock	Industrials	\$47.33	\$1,704	Dangerous		5%	-8%	6.5	> 100	Upgraded: Jan 22 Most Dangerous	✖
AIG	American International Group, Inc.	Stock	Financials	\$49.26	\$68,960	Attractive		6%	15%	0.8	< 1	Upgraded: Jan 16	✖
AMZN	Amazon.com Inc.	Stock	Consumer Discretionary	\$311.78	\$144,356	Dangerous		1%	-4%	-16.1	> 100	Upgraded: Jan 22	✖
BA	The Boeing Company	Stock	Industrials	\$147.78	\$105,357	Attractive		14%	6%	1.7	19	Poor Disclosure	✖
BBH	Van Eck Market Vectors Biotech ETF	ETF	Health Care	\$123.37	\$727	Neutral		16%	-1%	5.3	55		✖
BCSIX	Brown Capital Management Mutual Funds: Brown Capital Management Small	Mutual Fund	Small Cap Growth	\$70.01	\$2,634	Neutral		19%	0%	4.8	79		✖
BFAM	Bright Horizons Family Solutions, Inc.	Stock	Consumer Discretionary	\$49.16	\$3,238	Very Dangerous		6%	-3%	25.2	79		✖
CI	CIGNA Corporation	Stock	Health Care	\$109.62	\$28,674	Very Attractive		16%	4%	1.0	2	Most Attractive	✖
CRM	salesforce.com Inc.	Stock	Information Technology	\$58.10	\$36,661	Dangerous		-2%	-4%	-8.6	> 100	Upgraded: Jan 22 Most Dangerous	✖

Overview/Background

Independent Proprietary Research & Diligence

New Constructs, LLC

- Founded July 2002
- Top-rated research by [Barron's](#)
- Deep, financial accounting expertise
- Patented research technology
- Footnotes expertise is a competitive advantage
- Integrated ratings for 3000 stocks, 400 ETFs and 7000 mutual funds

David Trainer:

Former auditor with Arthur Andersen and equity analyst at Credit-Suisse, Mr. Trainer is the CEO of New Constructs, LLC. He leverages his accounting and finance expertise with proprietary technology that gleans insights from over 70,000 10-K filings.

Mr. Trainer also serves on FASB's [Investor Advisory Committee](#), where he helps shape new and existing accounting rules. He has also advised the Senate Banking Committee and the subcommittee for Securities, Insurance and Investments.

He is a Wall Street veteran and corporate finance expert.

He is author of [Modern Tools for Valuation](#) (Wiley Finance 2010).

What Do We Mean by “Independent and Unbiased”?

We Provide A True Investor Perspective

No banking, advisory or Wall Street ties – none

- Access our raw data via **Marked-up filings**: [download a sample](#).

Unadulterated expertise in accounting, finance and SEC filings.

DISCLOSURES

New Constructs®, LLC (together with any subsidiaries and/or affiliates, New Constructs®) is an independent organization with no management ties to the companies it covers. None of the members of New Constructs' management team or the management team of any New Constructs' affiliate holds a seat on the Board of Directors of any of the companies New Constructs covers. New Constructs does not perform any investment or merchant banking functions and does not operate a trading desk.

New Constructs' Stock Ownership Policy prevents any of its employees or managers from engaging in Insider Trading and restricts any trading whereby an employee may exploit inside information regarding our stock research. In addition, employees and managers of the company are bound by a code of ethics that restricts them from purchasing or selling a security that they know or should have known was under consideration for inclusion in a New Constructs report nor may they purchase or sell a security for the first 15 days after New Constructs issues a report on that security.

New Constructs is affiliated with Novo Capital Management, LLC, the general partner of a hedge fund. At any particular time, New Constructs' research recommendations may not coincide with the hedge fund's holdings. However, in no event will the hedge fund receive any research information or recommendations in advance of the information that New Constructs provides to its other clients.

DISCLAIMERS

The information and opinions presented in this report are provided to you for information purposes only and are not to be used or considered as an offer or solicitation of an offer to buy or sell securities or other financial instruments. New Constructs has not taken any steps to ensure that the securities referred to in this report are suitable for any particular investor and nothing in this report constitutes investment, legal, accounting or tax advice. This report includes general information that does not take into account your individual circumstance, financial situation or needs, nor does it represent a personal recommendation to you. The investments or services contained or referred to in this report may not be suitable for you and it is recommended that you consult an independent investment advisor if you are in doubt about any such investments or investment services.

Information and opinions presented in this report have been obtained or derived from sources believed by New Constructs to be reliable, but New Constructs makes no representation as to their accuracy, authority, usefulness, reliability, timeliness or completeness. New Constructs accepts no liability for loss arising from the use of the information presented in this report, and New Constructs makes no warranty as to results that may be obtained from the information presented in this report. Past performance should not be taken as an indication or guarantee of future performance, and no representation or warranty, express or implied, is made regarding future performance. Information and opinions contained in this report reflect a judgment at its original date of publication by New Constructs and are subject to change without notice. New Constructs may have issued, and may in the future issue, other reports that are inconsistent with, and reach different conclusions from, the information presented in this report. Those reports reflect the different assumptions, views and analytical methods of the analysts who prepared them and New Constructs is under no obligation to insure that such other reports are brought to the attention of any recipient of this report.

New Constructs' reports are intended for distribution to its professional and institutional investor customers. Recipients who are not professionals or institutional investor customers of New Constructs should seek the advice of their independent financial advisor prior to making any investment decision or for any necessary explanation of its contents.

This report is not directed to, or intended for distribution to or use by, any person or entity who is a citizen or resident of or located in any locality, state, country or jurisdiction where such distribution, publication, availability or use would be contrary to law or regulation or which would be subject New Constructs to any registration or licensing requirement within such jurisdiction.

This report may provide the addresses of websites. Except to the extent to which the report refers to New Constructs own website material, New Constructs has not reviewed the linked site and takes no responsibility for the content therein. Such address or hyperlink (including addresses or hyperlinks to New Constructs own website material) is provided solely for your convenience and the information and content of the linked site do not in any way form part of this report. Accessing such websites or following such hyperlink through this report shall be at your own risk.

All material in this report is the property of, and under copyright, of New Constructs. None of the contents, nor any copy of it, may be altered in any way, copied, or distributed or transmitted to any other party without the prior express written consent of New Constructs. All trademarks, service marks and logos used in this report are trademarks or service marks or registered trademarks or service marks of New Constructs.

Copyright New Constructs, LLC 2003 to present. All rights reserved.